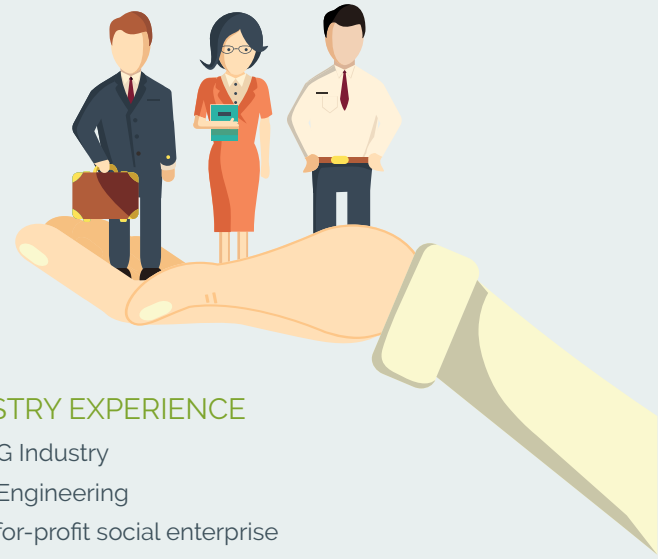




KERRY TATTERSALL

SENIOR CONSULTANT
HUMAN RESOURCES & ORGANISATIONAL
DEVELOPMENT



Kerry's passion lies in organisational and people development; supporting businesses in the development, management and growth of people in their organisations.

Kerry also has extensive experience in employment relations and specifically collective bargaining, personal grievances and complex disciplinary investigations.

Kerry has a Post Graduate Diploma in Human Resource Management (UK), majoring in employment law and employee relations, a Diploma in Occupational Safety and Health (NEBOSH) and is an accredited workplace coach through the Institute of Leadership and Management.

Prior to joining Staples Rodway Hawke's Bay, Kerry worked at a senior level business partnering within Human Resources for a global FMCG organisation.

MEMBERSHIP & QUALIFICATIONS:

- A Certified People Professional in HR (CPPNZ) via The Association of People Professionals (APPNZ)
- A Chartered Member of the Institute of Personnel and Development (MCIPD)
- Personality Type Indicator Accreditation
- Post Graduate in Human Resources Management with a specialist discipline in employment law & employee relations
- Diploma in Business Studies
- Workplace Coaching qualification through the Institute of Leadership and Management (ILM)
- Foundation Diploma of Neuro Linguistic Programming (NLP)
- Diploma in Health & Safety and Fire Safety & Risk Management – National Examination Board for Occupational Health & Safety

INDUSTRY EXPERIENCE

- FMCG Industry
- Civil Engineering
- Not-for-profit social enterprise
- Pharmaceutical manufacturing

SPECIALIST AREAS WHERE KERRY CAN HELP YOU:

- Organisational development
- Strengths based coaching
- Team profiling through personality type indicators
- Leadership development
- Employee engagement initiatives
- Wellbeing interventions
- Restructure & change management
- HR Compliance
- Policy and Procedure development
- Collective bargaining for employment agreements
- Disciplinary and performance management
- Dealing with personal grievances
- Employment Relations Advice
- Health & Safety Advice

GET IN TOUCH WITH KERRY

KERRY TATTERSALL
PH +64 6 8787704
MOB +64 210716855
ktattersall@stapleshb.co.nz 